



Whitlock's Weekly Whimsy

Week 3

Block 65

Cutting:

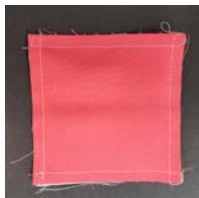
<i>Fabric</i>	<i>Measurements</i>
Color 2	4 @ 2 x 2
Color 3 & Color 12	1 @ 4 x 4 each
Color 8 & Color 11	1 @ 3 ½ x 3 ½ each

Sewing:

Half Square Triangles (HST)!

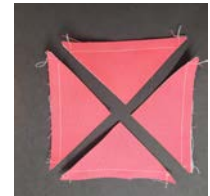
Now let's make them four at a time!

This technique is very nice for smaller blocks or inner blocks as you do end up with bias edges.



Layer your 3 ½ Color 8 & Color 11 squares RST. Sew ¼" seam all the way around the outside edge. The outside is your straight of grain.

Cut in half diagonally twice. Press towards the dark. When pressed you will notice that the outside corners are now a bias edge. You will need to be aware of this as you sew the parts of your block together, as they are easy to stretch. That is the reason these are best for small blocks or blocks that are not on the outside edge of your final project. Trim to 2 x 2

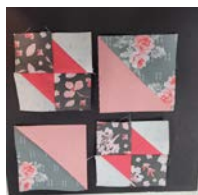


Using Color 3 and Color 12, make Two HST measuring 3 ½ x 3 ½ like you did in block 25.



It is time to lay out all your pieces on your design board and begin building.

Begin by making your four patch blocks with the 2" HST and 2" squares. Flip the right side over the left and sew. Then sew your rows together.



Now sew the four quadrants together to finish your block.

Congratulations! Six down...