

## Ember - Table Quilt

32" x 32"

featuring "Neutral Territory" by Audrey Wright of Legacy Patterns for RJR Fabrics

Fabric A #2526-01: 1 yard  
Fabric B #2523-02: 3/4 yard  
Fabric C #2520-02: 3/8 yard  
Fabric D #2521-02: 5/8 yard  
Fabric E #2523-01: 5/8 yard  
Fabric F #2521-01: 3/8 yard  
Fabric G #2522-01: 3/8 yard  
Fabric H #2524-02: 3/8 yard  
Red Tonal #2033-04: 1/4 yard  
Backing: 1 1/4 yards  
Batting: 40" x 40"

Notions: Thread for piecing and quilting.

Batting used is Warm & Natural® by The Warm Company

Designed by Christine Stainbrook

The information in this pattern is presented in good faith. Every effort has been taken to assure the accuracy herein. This pattern may not be reproduced in any form, either electronic or hard copy. The finished product may not be used for mass retail, commercial, or wholesale purposes, markets, or trade shows without written permission.

© 2015 Project House 360

# EMBER

Table Quilt



A Project House 360 Quilt Pattern  
featuring collections from



## Ember Color Card



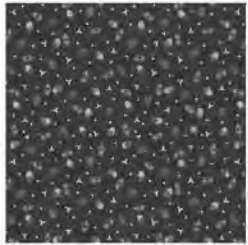
Fabric A  
#2526-01



Fabric D  
#2521-02



Fabric G  
#2522-01



Fabric B  
#2523-02



Fabric E  
#2523-01



Fabric H  
#2524-02



Fabric C  
#2520-02



Fabric F  
#2521-01



Red Tonal  
#2033-04

### Cutting:

Note: Keep pieces separate in piles by shape and fabric.

#### Fabric A:

- 8 – 1 3/4" x 8"
- 8 – 1 3/4" x 7"
- 4 – 1 3/4" x 9 1/4"
- 4 – 1 3/4" x 8 1/4"
- 4 – template D reversed
- 4 – template E
- 4 – 2 1/2" x WOF (binding)

#### Fabric B:

- 8 – 1 3/4" x 6 1/2"
- 8 – 1 3/4" x 5 1/2"
- 4 – 1 3/4" x 7 1/4"
- 4 – 1 3/4" x 6 1/4"
- 8 – template A

#### Fabric C:

- 8 – 1 3/4" x 3 3/4"
- 8 – 1 3/4" x 4 3/4"
- 4 – 1 3/4" x 5 1/4"
- 4 – 1 3/4" x 4 1/4"

#### Fabric D:

- 8 – 1 3/4" x 2 1/4"
- 8 – 1 3/4" x 3"
- 2 – 1 3/4" squares
- 2 – 1 3/4" x 3"
- 4 – template D
- 4 – template E reversed

#### Fabric E:

- 8 – 1 1/4" squares
- 8 – 1 1/4" x 2"
- 8 – 1 1/4" x 8"
- 8 – 1 1/4" x 9"
- 4 – template G
- 4 – template G reversed
- 4 – template F
- 4 – template F reversed

#### Fabric F:

- 8 – 1 1/4" x 6 1/2"
- 8 – 1 1/4" x 7"
- 4 – template B
- 4 – template B reversed

#### Fabric G:

- 8 – 1 1/4" x 4 3/4"
- 8 – 1 1/4" x 5 1/2"

#### Fabric H:

- 8 – 1 1/4" x 3"
- 8 – 1 1/4" x 3 3/4"
- 4 – template B
- 4 – template B reversed

#### Red Tonal:

- 8 – 1 1/4" squares
- 8 – template C

**Block A:**

Make 8

Make 8 copies of the Block A foundation pattern. Beginning with pieces A1 and A2, use paper piecing techniques to sew the A pieces to the paper foundation as follows:

- A1 - fabric E 1 1/4" squares
- A2 - red tonal 1 1/4" squares
- A3 - fabric E 8 – 1 1/4" x 2"
- A4 - fabric D 1 3/4" x 2 1/4"
- A5 - fabric D 1 3/4" x 3"
- A6 - fabric H 1 1/4" x 3"
- A7 - fabric H 1 1/4" x 3 3/4"
- A8 - fabric C 1 3/4" x 3 3/4"
- A9 - fabric C 1 3/4" x 4 3/4"
- A10 - fabric G 1 1/4" x 4 3/4"
- A11 - fabric G 1 1/4" x 5 1/2"
- A12 - fabric B 1 3/4" x 5 1/2"
- A13 - fabric B 1 3/4" x 6 1/2"
- A14 - fabric F 1 1/4" x 6 1/2"
- A15 - fabric F 1 1/4" x 7"
- A16 - fabric A 1 3/4" x 7"
- A17 - fabric A 1 3/4" x 8"
- A18 - fabric E 1 1/4" x 8"
- A19 - fabric E 1 1/4" x 9"

After adding the last piece, trim the block 1/4" past the outer foundation line. Remove paper. Square up to 8 1/2". Repeat to make 8.

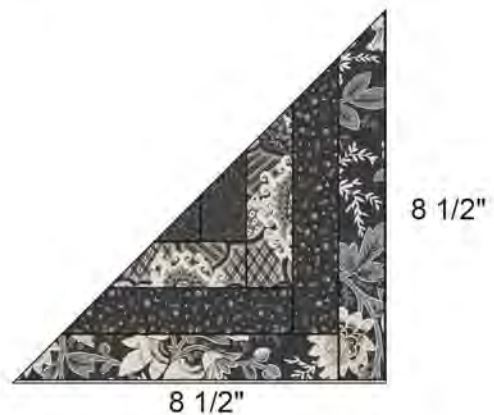
**Block C:**

Make 4

In the same manner, make 4 copies of the Block C foundation pattern. Sew the C pieces to the paper foundation as follows:

- C1 - fabric D 1 3/4" squares
- C2 - fabric D 1 3/4" x 3"
- C3 - fabric C 1 3/4" x 4 1/4"
- C4 - fabric C 1 3/4" x 5 1/4"
- C5 - fabric B 1 3/4" x 6 1/4"
- C6 - fabric B 1 3/4" x 7 1/4"
- C7 - fabric A 1 3/4" x 8 1/4"
- C8 - fabric A 1 3/4" x 9 1/4"

Trim the completed block 1/4" past the outer foundation line. Remove paper. Repeat to make 4.

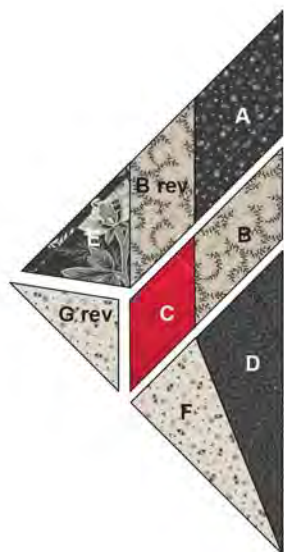
**Block B:**

Make 4

Join an A, B reverse and E piece together as shown.



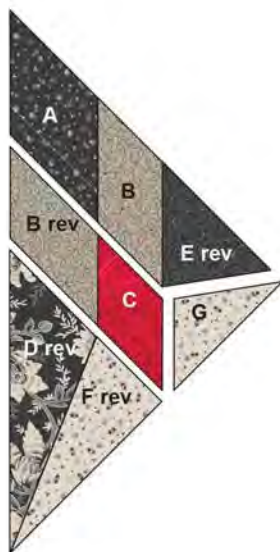
In the same manner, join the B and C pieces. Sew the B/C unit to the G reverse piece, stopping seam 1/4" from the end. Join the A/B/E piece, completing the Y seam. Sew the D and F pieces together and add to the unit to complete the half block. Make 4.



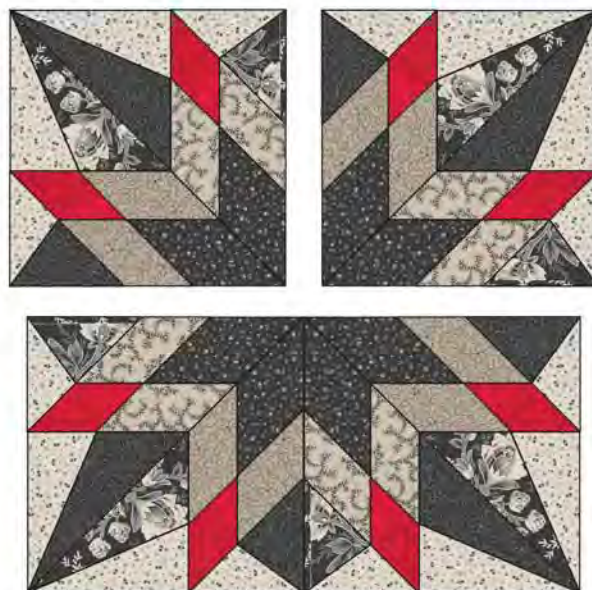
**Assembly:**

Noting placement, join the 4 B blocks to make the center medallion. The medallion should measure 16 1/2" square.

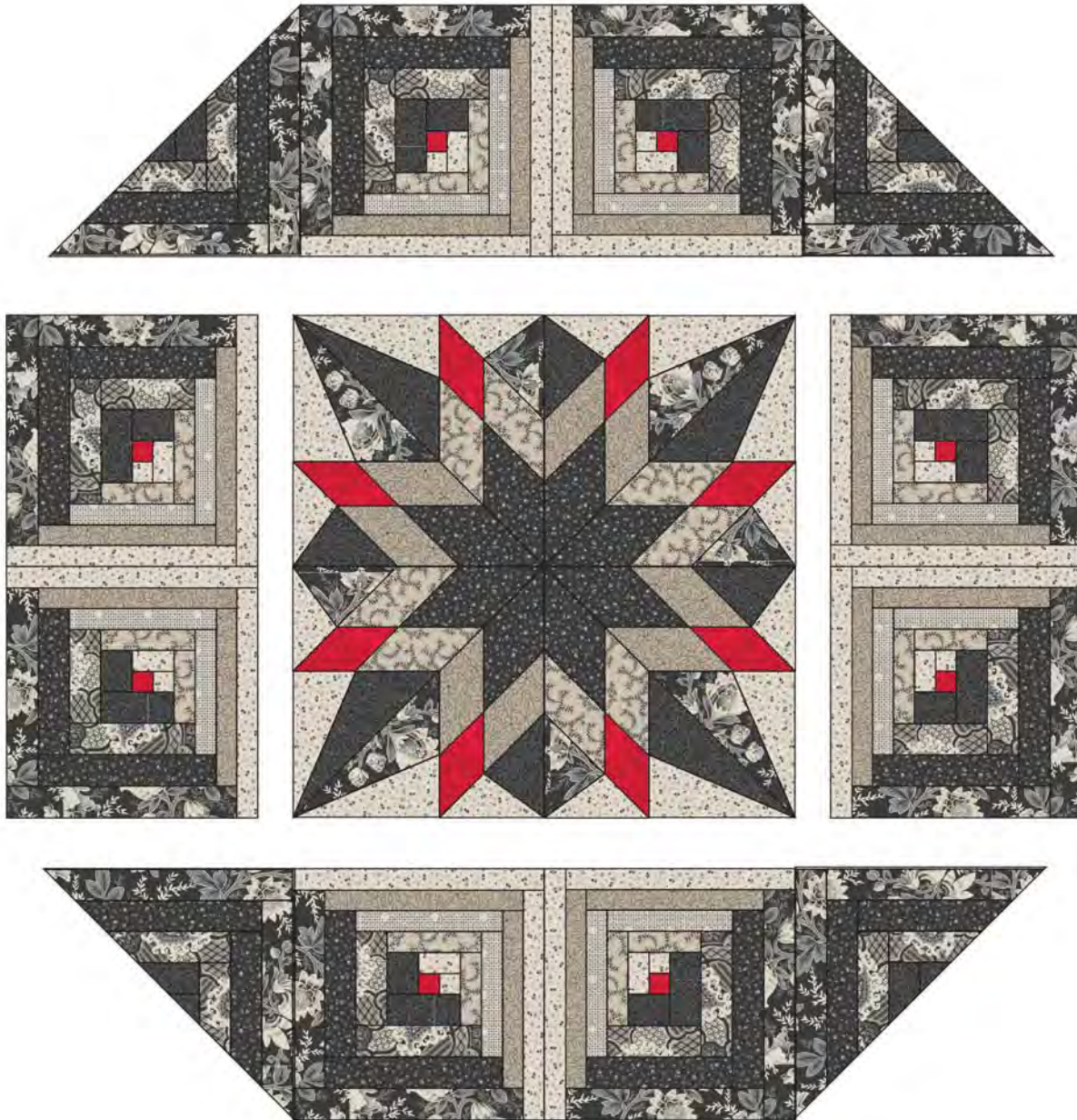
In the same manner, use the pieces shown below to make the mirror image half block. Make 4.



Sew the half blocks together to make a B block. Square up to 8 1/2". Make 4.



Sew the A blocks together in pairs, noting orientation in the Assembly Diagram on p. 4. Sew A pairs to opposite sides of the center medallion. Add the C blocks to the ends of the remaining A pairs and sew to the top and bottom of the center.



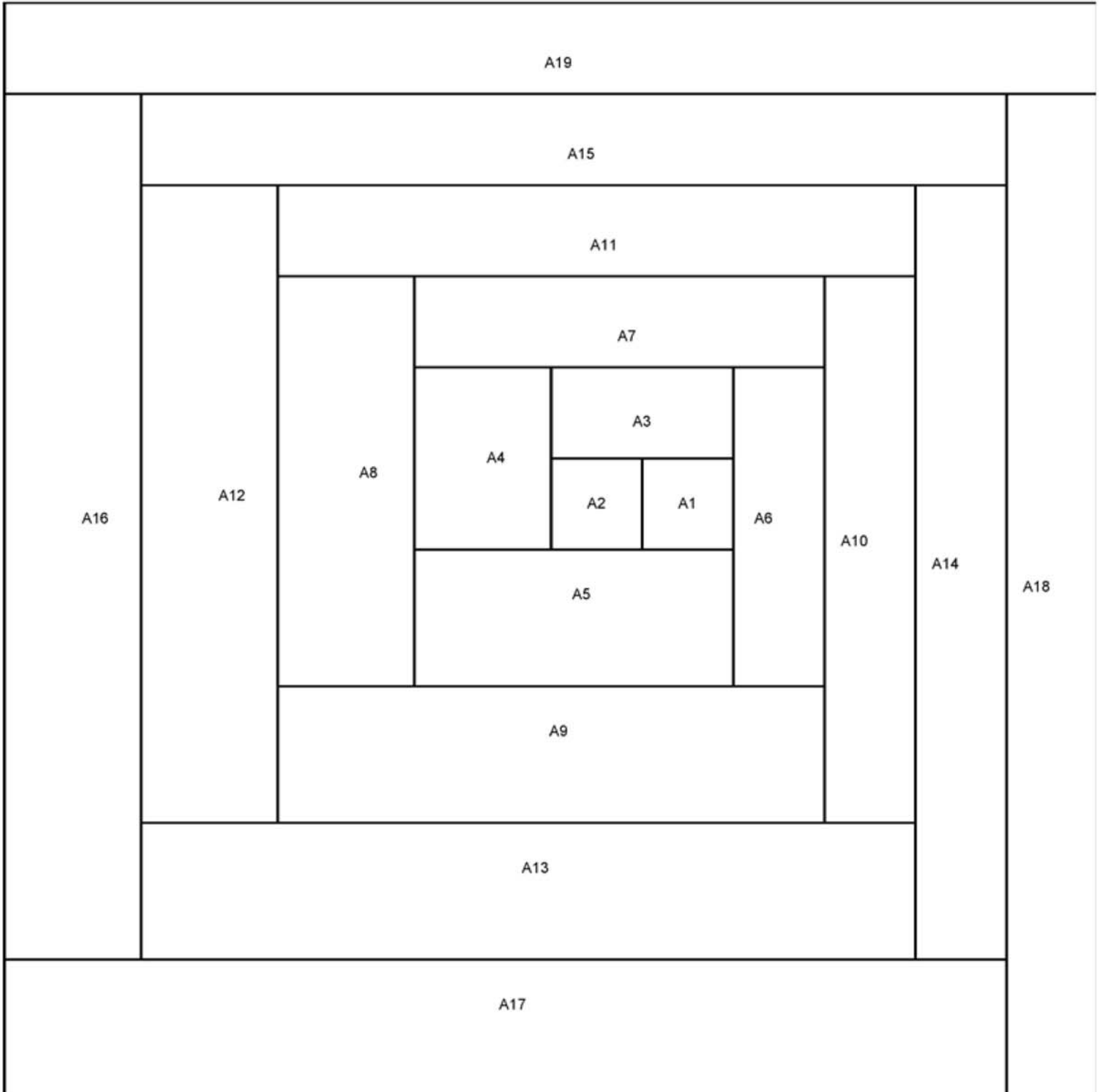
Layer, baste and quilt as directed.  
Bind with the Fabric A 2 1/2" x WOF strips.

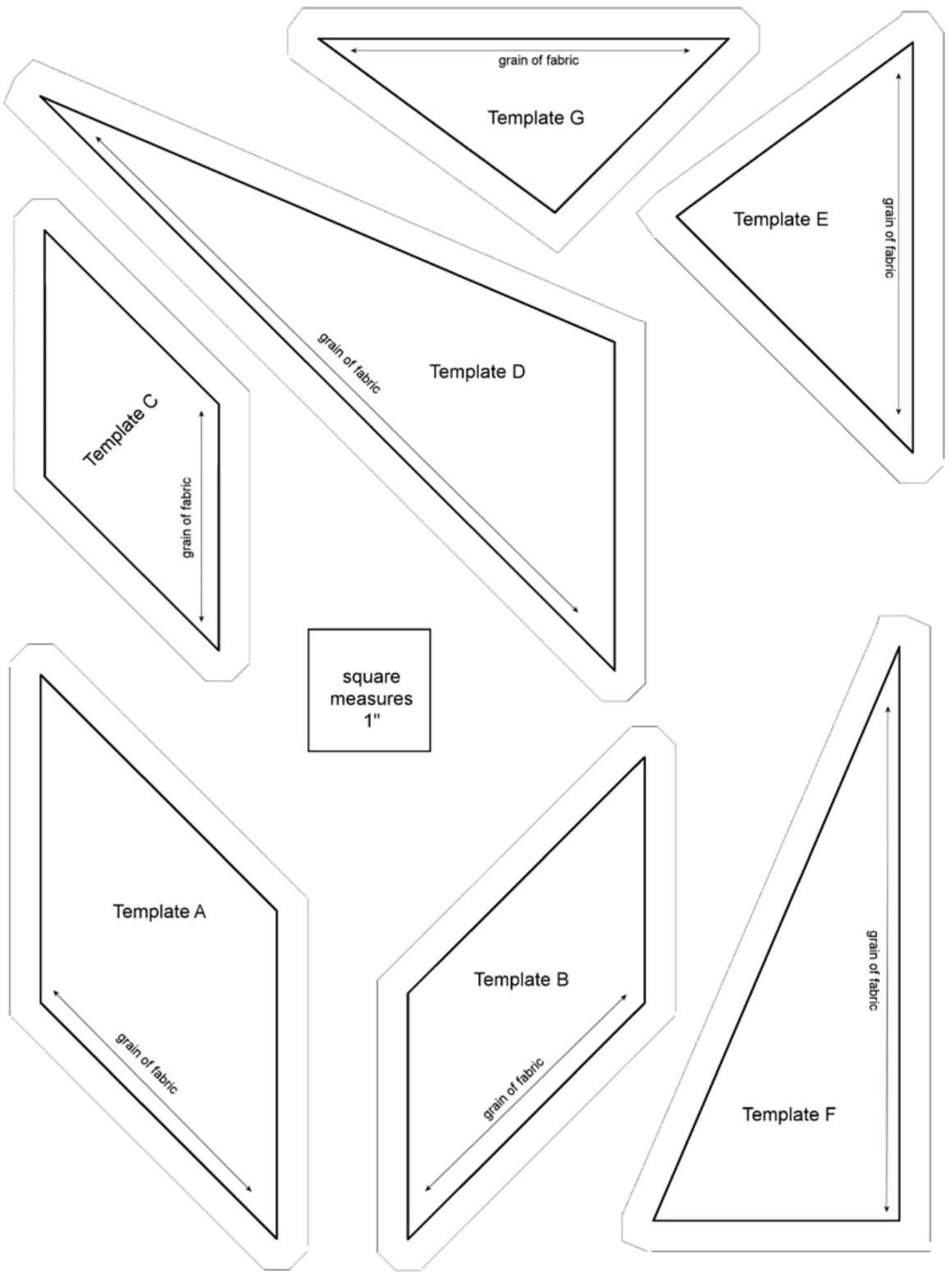
square  
measures  
1"

Block A Foundation  
Make eight copies of this page

NO SEAM ALLOWANCE INCLUDED

When trimming completed foundation  
add a 1/4" seam allowance  
to outside edge of foundation





grain of fabric

Template G

Template E

grain of fabric

Template D

grain of fabric

Template C

grain of fabric

square  
measures  
1"

Template A

grain of fabric

Template B

grain of fabric

Template F

grain of fabric

Block C Foundation  
Make four copies of this page.

NO SEAM ALLOWANCE INCLUDED

When trimming completed foundation  
add a 1/4" seam allowance  
to outside edge of foundation

