

You may pick up the Supply List at the store. Supply List also included with registration confirmation.

**BAG MAKING WORKSHOP**

Instructor: Janae King

**DATES:** Saturday October 21, or Sunday November 19

**TIME:** 11:00AM-5:00PM

**COST:** \$45

Leather handle are also available for purchase.



This class is for all experience levels, Beginner bag makers to Advanced. Sewing experience is required. Ability to use sewing machine without assistance.

– Have you said to yourself “I want to sew a bag”, but it seems scary and overwhelming...then come to Janae’ King’s Bag Making Workshop, where she will teach you all she knows about the bag making process. She will give you tips and tricks and even show you how to make a wallet, attach leather handles, and make your own key chain too. Janae has a wealth of knowledge from sewing over 200 bags. She says she can “sew them in her sleep” and we bet she can!

**SUGGESTED PATTERNS:** Any bag pattern by Janae’ King or pattern from the book “Handmade Style” by Noodlehead. These are available for purchase at Whitlock’s. You may also choose any bag pattern of your choice.

**ANITA GOODESIGN TILE QUILT**

Instructor: Gari Kirk

**DATE:** Thursdays—September 28 9:30am-3:30pm (lunch break) and October 12 9:30 am-12:00pm (Two-Part Class)

**COST:** \$75

**EXPERIENCE LEVEL:** Beginners to Advanced. Need to be able to do machine embroidery.

This class is about learning the technique of using Tile Designs to make a quilt.



Examples of Tile Quilts

For this class you may use any Anita Goodesign Tile Quilt Design.

Go to [www.anitagoodesignonline.com](http://www.anitagoodesignonline.com) and choose a Tile Design. Whitlock’s will be happy to order the design for you. Order your design by calling Whitlock’s before September 14, 2017. We cannot guarantee delivery prior to the day of the first class unless the order is placed before September 14.

**FIRST CLASS:** Thursday, September 28. In this class, you will be going over the steps to create a block. You will need to make several blocks at home before the second class.

**SECOND CLASS:** Thursday, October 12. In this class, you will discuss how to sew the blocks together.

See Supply List for a complete list of supplies.

For more information regarding events, see our Class calendar at [www.whitlocks.com](http://www.whitlocks.com) or call store.

FRIDAY, SEPTEMBER 22  
TIME: 9:30AM-12:30PM  
COST: \$30 Morning Only

STEPPING STONES TO  
QUILTING YOUR FIRST QUILT

FRIDAY, SEPTEMBER 22  
TIME: 1:30PM-4:30PM  
COST: \$30 Afternoon Only

A STRAIGHT LINE TO MODERN  
QUILTING

SATURDAY, SEPTEMBER 23  
TIME: 9:30AM-12:30PM  
COST: \$30 Morning Only

CUSTOM WAVES, CURVES,  
AND CIRCLES

SATURDAY, SEPTEMBER 23  
TIME: 1:30PM-4:30PM  
COST: \$30 Afternoon Only

START SIMPLE, EXPAND TO  
AMAZING

BUNDLE PRICE

BOTH DAYS, 4 SESSIONS \$105.00

Save \$15 by purchasing bundle



FRIDAY, NOVEMBER 17  
TIME: 9:30AM-12:30PM  
COST: \$30 Morning Only

LONG ARM QUILTING BOOT CAMP  
BASICS

FRIDAY, NOVEMBER 17  
TIME: 1:30PM-4:30PM  
COST: \$30 Afternoon Only

ALL ABOUT FEATHERS

SATURDAY, NOVEMBER 18  
TIME: 9:30AM-12:30PM  
COST: \$30 Morning Only

RULER MANIA

SATURDAY, NOVEMBER 18  
TIME: 1:30PM-4:30PM  
COST: \$30 Afternoon Only

3 Bs —BACKGROUNDS, BORDERS  
& BLOCKS



December 9  
10:00am-2:00pm

Our annual party is always fun social event. Meet the teachers, request classes, and see all the new sewing notions.

## CLASSES SEPTEMBER-DECEMBER 2017

You may pick up the Supply List at the store. Supply List also included with registration confirmation.

MOD SQUAD: 'PATCHWORK CITY' Instructor: Carole Kurth  
DATES: Tuesday(2<sup>nd</sup> Tuesday each month)September 12, October 11 (**Wednesday-this month only**), November 14 and December 12  
TIME: 6:00PM-9:00PM  
COST: \$15 per evening

Experience Level: Intermediate

"What IS Modern quilting?" Here is a great way to find out! Featuring blocks emulating Portland city scenes, challenge yourself in a new colorway, + use up scraps and small bits, compare and show-off to the 'squad;' let's have **F-U-N!**

A new square of challenge fabric is included each month.

Book: Patchwork City by Elizabeth Hartman (Available at Whitlock's)



QUILT COLLAGE Instructor: Carole Kurth  
Two-Part Class  
DATES: Sunday, September 10 & 24 OR November 19 & December 10  
TIME: 1:00pm to 5:00PM  
COST: \$59

Experience Level: Intermediate to Advanced Sewists **ONLY**

Just in time for Christmas!! **A SANTA collage!!** Gather your greens, whites and reds, and make a wall quilt to welcome Christmas—OR--if you prefer, build that *classic pick-up truck!*

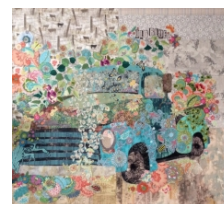
**Purchase your supplies online BEFORE YOUR CLASS!\***

**CHOOSE ONE: 'NICK,' OR 'OLD BLUE'—located at Whitlock's**

**Fabrics and supplies as pattern requires**

**KIT (if needed):** Go online to [www.fiberworksquilting.com](http://www.fiberworksquilting.com)

**\*DO NOT PURCHASE FUSIBLE PRIOR TO CLASS!! (NO STEAM-A-SEAM)**



You may pick up the Supply List at the store. Supply List also included with registration confirmation.

**PAINTED LADIES**

Instructor: Carole Kurth

Two-Part Class

DATES: Sunday, October 8 & 22

TIME: 1:00pm to 5:00pm

COST: \$59

Experience Level: Intermediate



Love 'House Quilts'? These classic 'row houses' will freshen a beach house or cottage nook. Build 'Painted Ladies' in classic pastels to echo the ocean, or make them in Christmas colors for a new cuddle-quilt or holiday wall hanging. Two sizes: Twin (60" x 72") and Wall (18" x 24"),

**Pattern Needed:** "Fierce Ladies," or "Painted Ladies." Available at Whitlock's.  
**Fabrics and Supplies as Pattern Requires**



**HANDWORK CLASS**

Instructor: Janae King

DATE: Saturday December 2

TIME: 12:00pm to 4:00pm

COST: \$25



Do you want to learn how to hand sew quilt blocks? Have you thought about learning needle turn applique but do not know where to start? This is the class for you. Bring any pattern and supplies listed for the pattern.

This class is for those wanting to work on handwork or applique. Janae will help students with hand embroidery and applique questions and demonstrate various techniques on hand embroidery and needle turn applique.

You may pick up the Supply List at the store. Supply List also included with registration confirmation.

OCEAN TRELLIS Instructor: Rachael Harms  
DATE: Sunday, September 24 & Sunday, October 8  
TIME: 12:00 PM-4:00PM  
COST: \$59



Love jelly rolls? Hate wasting fabric? This quilt uses up every thread of your jelly roll and creates a stunning quilt top. Join Rachael for two sessions to create this beauty. Pattern provided in class.

## CLUB TABLE TOPPERS FOR ALL SEASONS

Instructor: Jeri Petzel

Join *Club Table Toppers For All Seasons*. Sign up at Whitlock's. The cost is a one-time \$59.99 for 12 months. That is \$5.00 per month for the design and project instructions. You will receive **direct from Patrick Lose Studios**, a design each month and all the instructions to make the project.

Each month the Club will meet at Whitlock's to work on the projects. You will learn tips and tricks and have a chance to socialize. Kits are available for purchase for each project made with Patrick Lose Studios fabric. Kits are optional and available at the Club meeting. Cost of the kits will vary. The cost of the monthly Club is \$15.00.

The first Club is Saturday, September 30, 2017 from 1:30pm to 4:30pm. Thereafter, the Club will meet First Saturday of every month, 1:30pm-4:30pm.

September 30	January 6	April 7	July 7
November 4	February 3	May 5	August 4
December 2	March 3	June 2	September 1



presents a new club...

### TABLE TOPPERS FOR ALL SEASONS

- A new Patrick Lose table topper project every month for 12 months
- Four table runners, four placemats and four centerpiece mats
- Complete instructions, including color illustrations and all templates for any applique projects
- TWO BONUS THROW QUILT PROJECTS delivered at 6th and 12th months! An additional \$24 value!

An added bonus for those who are machine embroiderers or use digital cutters: We will also include the machine embroidery files and SVG cutting files for any project that includes Patrick's trademark fusible applique designs, at no additional charge.



Here are some examples of the types of projects you'll receive when you join. Each month is a surprise.

**CLUB EMBROIDERY**

Instructor: Linda Jones

Club Embroidery is open to all models of embroidery machines. Customers who are not sure if their hoop size is appropriate for the project please check with the store.

August 19, 2017

Instructor: Linda Jones

1:00pm-5:00pm

Learn to make custom labels with your embroidery machine.

Hoop SQ 14 (5.5" x 5.5")

Project: Quilt Labels

Cost \$30 includes Kit



September 16, 2017

Instructor: Linda Jones

1:00pm-5:00pm

This Club project can be used in a frame, table runner, quilt or pillow top and more.

The design is from the Anita Goodesign Collection It's A Bud's Life.

The second part of the design will be available at the next club in October.

Hoop SQ 23 (9.1" x 9.1")

Project: Bud's Life Buttercup Part 1

Cost \$30 includes Kit



October 21, 2017

Instructor: Linda Jones

1:00pm-5:00pm

This Club project will complete the Buttercup design as you embroider the second part of the design. The first part was the project for September.

Hoop SQ 23 (9.1" x 9.1")

Project: Bud's Life Buttercup Part 2

Cost \$30 includes Kit



November 25, 2017

Instructor: Linda Jones

1:00pm-5:00pm

Linda shows you a fun Christmas themed project and a chance to embroider on silk.

Hoop GR (9.1" x 11.8")

Project: Christmas Collage on Silk

Cost \$25 Kit: \$10 paid directly to instructor

You may pick up the Supply List at the store. Supply List also included with registration confirmation.

**CLUB HANDI QUILTER** Instructor: Jeanette Pitalo  
DATES: Saturday, September 9, October 14, November 11, December 2  
TIME: 10:00AM-12:00PM  
COST: \$15 FREE with Handi Quilter MAP



If you are a longarm quilter, this is what you have been waiting for! A place to share ideas and solve problems. Find out the latest and greatest tools and tips. Come and join us for a fun filled time.

Bring Your Projects for Show and Tell.

**PRO-STITCHER CLASS** Instructor: Jeanette Pitalo  
DATES: Saturday, September 9, October 14, November 11, December 2  
TIME: 1:00PM-3:00PM  
COST: \$30



This is a terrific place to get all of your Pro-Stitcher questions answered. Join other Pro-Stitchers to learn new techniques from Jeanette and share ideas. She will also tell all about the newest tools and great tips. You may bring your laptop (optional).

## **FINISH IT FRIDAY** **4:00-7:00PM SECOND FRIDAY OF EVERY MONTH**

Join Jeanette to finish your work in progress on the Second Friday of each month! Bring those unfinished projects and your sewing machine to get to work!!

September 8, October 13, November 10, December 8

Cost: \$15

Starts January 2017 and runs through December 2017.





Stop by between 3:00 & 7:00 and make a great 15-minute project. No RSVP necessary. These projects are easy enough for any skill level. Sewing machines and cutting equipment will be ready and waiting for you to create. Kits \$10 for the night's project.

Wednesday September 6  
Wednesday October 4  
Wednesday November 1  
Wednesday December 6

## **BLOCK OF THE MONTH FIRST SATURDAY**

Come and join us for the first Saturday Block of the Month. Yes, we know it's early, but it will be totally worth getting up for!

The first month's kit is \$10, and when you bring your finished block the following month, the kit is only \$5.

The quilt is from the book, "Vintage Quilt Revival". We will be making 12 out of the 24 blocks that are a modern twist on classics.

Door prizes, the latest in notions, plus we'll show you how to put them all together. Project sharing is a big part of the fun!

Starts January 2017 runs through December 2017

Cost: \$10

Saturday September 2 8:30-9:30  
Saturday October 7 8:30-9:30  
Saturday November 4 8:30-9:30  
Saturday December 2 8:30-9:30





## CLASS AND EVENTS POLICY

We are here to help you have a great experience.

**REGISTRATION:** It is necessary to pre-register for classes and events. Payment is due at time of registration and assures a seat in the class or event. Payment accepted in the store or over the phone by credit card.

**REFUND:** For Machine Mastery and Software Level Classes, we will refund a class fee up to five(5) days prior to the date of the class or transfer the fee to another date that the class is offered. For classes other than Machines Mastery and Software Level Classes, you need to cancel five (5) days prior to class to receive a refund. After 5 days, we cannot refund your registration; however, you may sit in a class taught by the same teacher. Refunds are not applicable to events.

**CANCELLATION:** From time to time, it may be necessary to cancel a class. Registration fee promptly refunded when a class cancels.

**WAIT LIST:** Placement on a wait list when class is full does not require payment in advance. Payment is due at the time a seat becomes available.

## PARKING

### PARKING OPTIONS:

Parking is available at the Chemeketa Parkade.

Parking on the street is for three hours. After three hours, it is necessary to move vehicle to another block and not on the same street.

There is a paid parking lot behind the store at the end of the alley or off Chemeketa.

Drop off your machine and supplies prior to parking by pulling into the alley next to the store. Please make sure not to block the sidewalk.

**Whitlock's Loyalty Card:** Receive a punch on the card for all notion and fabric purchases. The card is not eligible for a punch in combination with other discounts. When the card is completed, the value of the card is \$25 for the purchase of merchandise in the store. After completing five punched cards, you are eligible to step up to the \$30 punch card.

## CLASS PRICING

### MACHINE MASTERY and SOFTWARE CLASSES

A Machine Mastery Class cost is \$15.00 per Level for machines purchased at Whitlocks or if purchased elsewhere you can take Level Classes at \$15.00 per level if the machine owned is within Whitlock's current line. Otherwise, the Level Class is considered a Private Class. A \$15 in-store credit is issued on day of the class and is to be used on day of class only. A cash refund is not available.

Level Classes are included with purchase of the Machine Assurance Program ( M.A.P.). Starting December 2016 customers have a choice of either a 10% discount on a regular price item or a punch on the loyalty card. Covered under the MAP program are notions and sew parts. The MAP program does not include fabric or precuts.

Specialty Software classes are offered from time-to-time and the cost is listed with the class information.

Private classes are available for \$50.00 per hour. Please contact store for more information or if you have any questions.