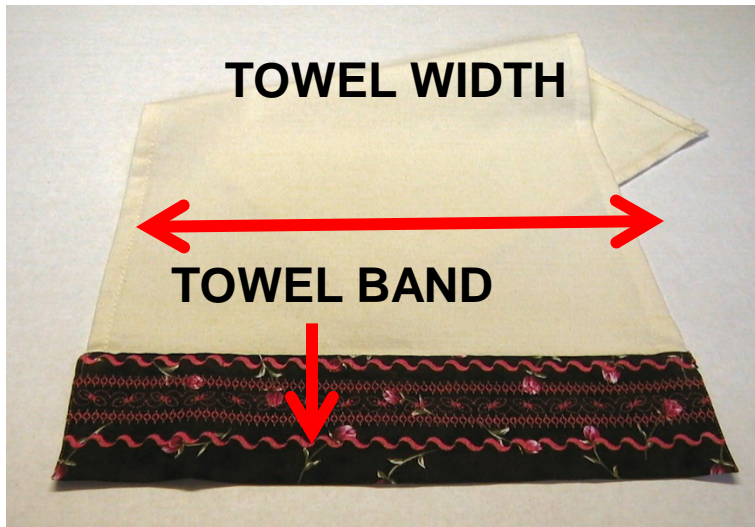




TOWEL WITH DECORATIVE STITCH BAND
TUTORIAL GUIDE



TIP: If using a purchased towel you may want to remove the band at the bottom of the towel to eliminate bulk.



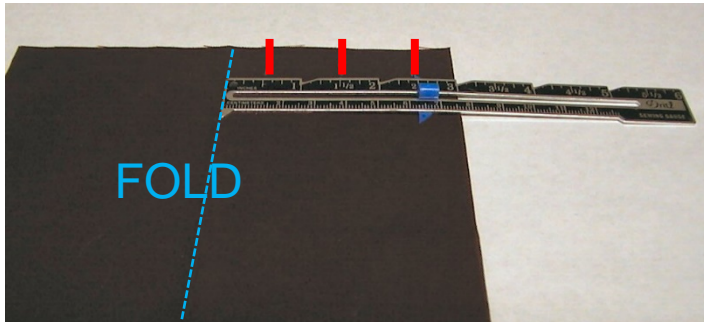
Prepare towel by sewing unfinished sides.
Fold raw edge over $\frac{1}{2}$ ' and press.

Fold edge over again $\frac{1}{2}$ " and press.

Repeat for three sides if you are using fabric in place of a towel. Leave the bottom edge flat, without a hem for attaching the towel band.



Prepare towel band. Cut fabric 2" longer than width of towel by 6 1/2 " wide.

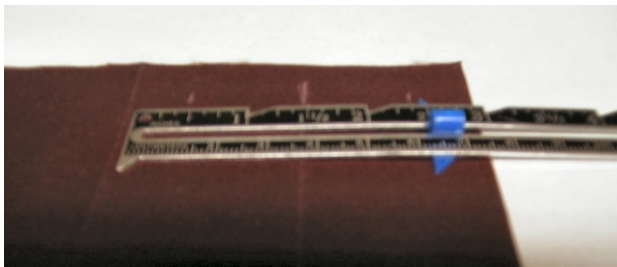


Fold band in half.

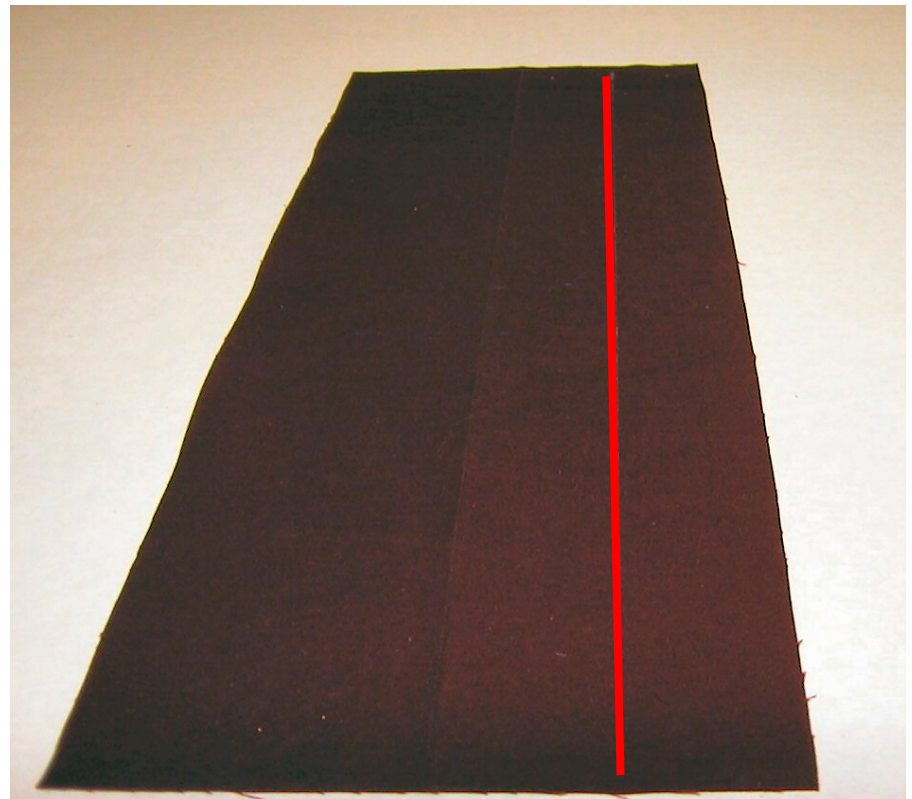
Mark 1/2" from raw edge and 1/2" from fold line.

Mark center point between the 1/2" markings.

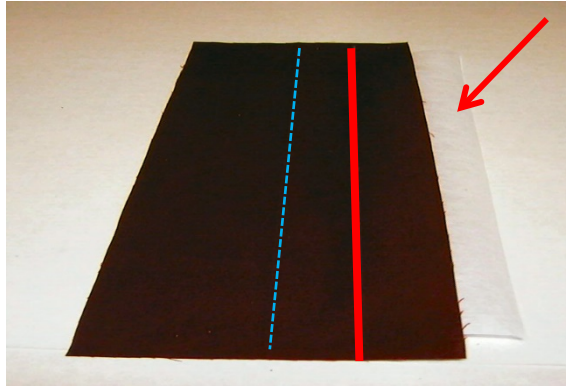
Draw a line down the length of the band using the center marking.



Example of marking fabric after lines are placed on the band fabric.

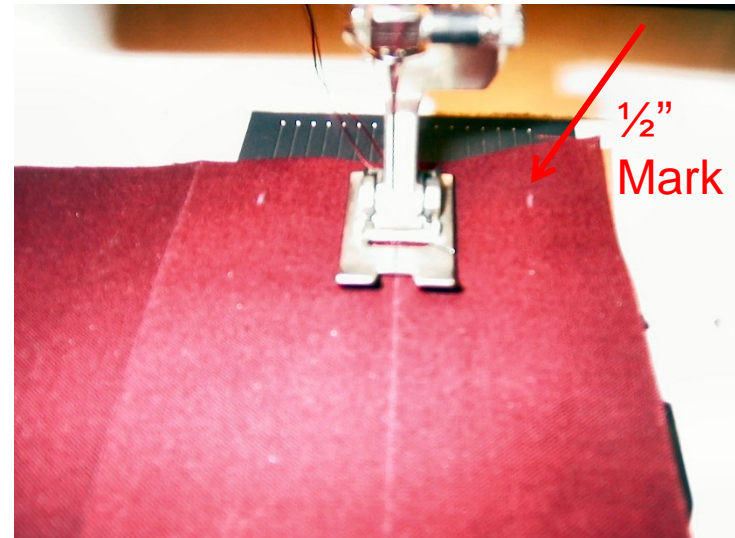


Lay a 3" wide by length of fabric strip of tear-away stabilizer under the wrong side of the fabric band. Line up stabilizer to cover the side used for decorative stitches.



Start decorative stitches on center line. For other rows line up by using the side of the presser foot.

Stitches should not exceed 1/2" marks.



Place decorative stitches as desired. The number of Rows will depend on the width of the decorative stitches.

Stabilizer on back of band.



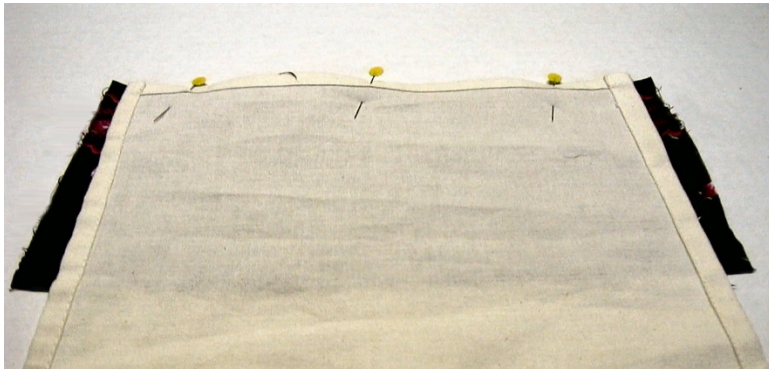
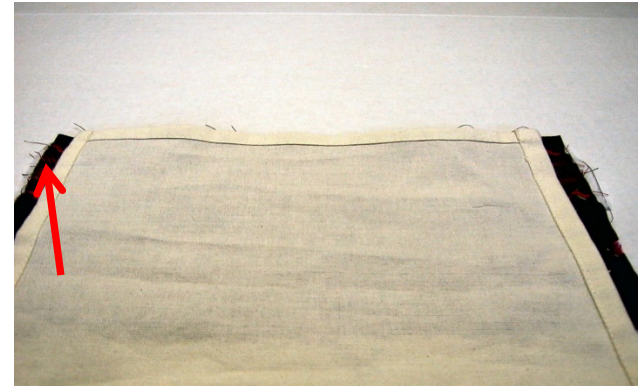
Remove stabilizer on the outside decorative stitch rows and at each end.

Tip: It is almost impossible to remove all the stabilizer between decorative stitches. However, tear-away stabilizer will eventually become soft and wash out.

Place band right side up with decorative band on top.

Lay the towel right side down, bottom towel edge matching raw edge.

Evenly have band edges extend beyond towel edge on both sides.



Place pins across edge to hold the band in place.

Lay towel and band on ironing board with band wrong side up. The decorative stitching should be placed on the bottom edge.

Press each edge over so side of bands are even with the towel.

Bottom Edge
of Towel

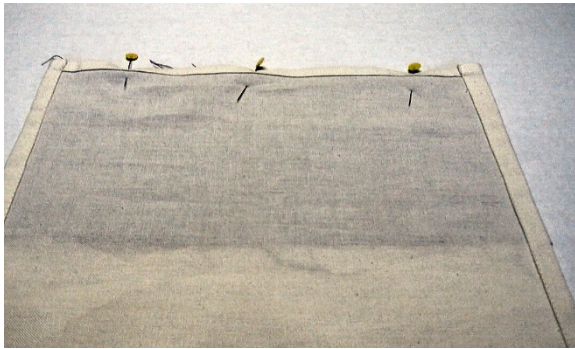


Tailor Clapper



Tip: To help the edges of the band you can use a tailors clapper to press edges securely and/or a spray such as a spray starch or Best Press.

Lay towel and band flat with wrong side of towel face up.

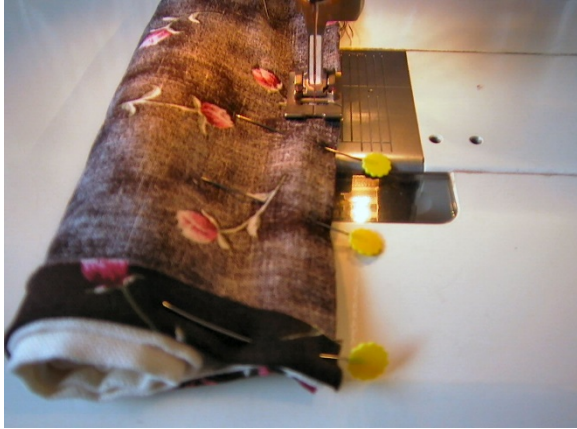


Roll towel up toward top of band.



Bring band up to top of towel. Line up edges and pin along top of band enclosing the towel. Make sure to match side edges.

Stitch a scant $\frac{1}{2}$ ' along top of band. Make sure not to catch the towel in the stitching.



Keep ends even by using a guide.



After seam is sewn it will look like a "log."

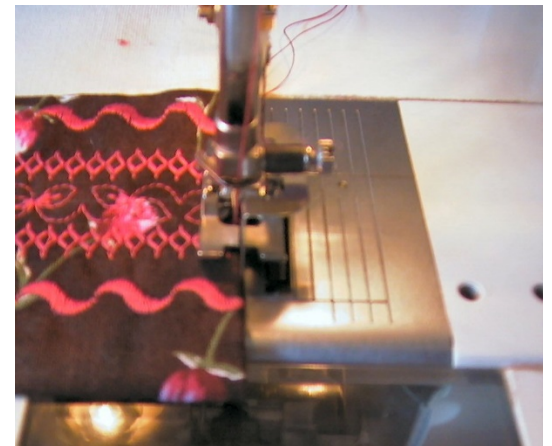
Pull the towel out from inside the “log” and press.



Secure ends of band with topstitching the same distance from the edge as the hem. The stitching should line up with the hem stitching.

An edge stitch foot can be helpful or draw a guide line.

Tip: You may want to try your hand stitch technique in place for the top stitching. Use a slip stitch.



Completed towel with decorative stitch band.